

# accent jr.

children's seating collection



# accent jr.

The versatile Accent Jr. stacking chair is available with upholstered or wood back and is a perfect fit for pediatric spaces such as waiting areas, lounges and patient rooms. Accent Jr. is comfortable, efficient and durable enough to withstand intensive use. Coordinating tables provide children with a creative activity space during their stay.

## Features

- Limited lifetime warranty
- 14-gauge steel frame powder-coated in a range of finishes
- Exceeds BIFMA Seating Durability test to 500 lb.
- Contoured back and waterfall seat design enhance comfort
- Collection includes coordinating activity tables

## Options

- Custom frame finishes
- Custom wood back finishes
- Contrasting fabrics
- CALTB 133 Compliance
- Moisture barrier



Stance Healthcare seating products are Level Certified. To learn more, visit [www.levelcertified.org](http://www.levelcertified.org).



## features



Compound-curved back provides a snug fit



Leg design eliminates plastic cap for increased safety



Wood back available in eight standard finishes.  
Custom cut-outs and etching also available



“Waterfall” front edge design enhances comfort

# Statement of Line



**Upholstered back**  
 W 15.5  
 D 16  
 H 24  
 Seat H 14.75  
 Seat W 14



**Wood back**  
 W 15.5  
 D 16  
 H 24  
 Seat H 14.75  
 Seat W 14



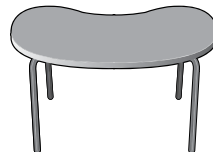
Activity table - oval  
 21" x 40" x 22"



Activity table - round  
 24" diameter x 22" H  
 30" diameter x 22" H  
 36" diameter x 22" H



Activity table - square  
 24" x 24" x 22"  
 36" x 36" x 22"



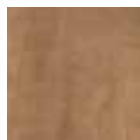
Activity table - kidney  
 21" x 40" x 22"

\*Custom cut outs and etching available for wood back models.

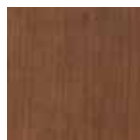
## Wood back finish selection:



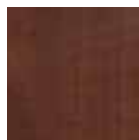
Hardrock  
 Maple (HM)



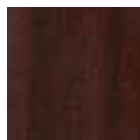
Candlelight  
 (CL)



Rustic Cherry  
 (RC)



Summer Flame  
 (SF)



Mahogany  
 (MA)



Cherry  
 Blossom (CB)

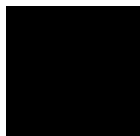


Grenada  
 (GR)



Chocolate  
 (CH)

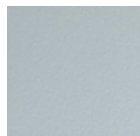
## Metal frame finish selection: *\*Custom frame finishes available on request*



Smooth Black



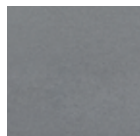
Textured Black



Textured Nickel



Smooth Silver



Gunmetal



Metallic Beige



Round table with Accent Jr. chairs



STANCE | HEALTHCARE

45 Goodrich Drive Kitchener, ON N2C 0B8 tel 1.877.395.2623 fax 1.877.395.6270 stancehealthcare.com  
 S01-17 © Stance Healthcare Inc. all rights reserved.

