

# treatment tables



# treatment tables

Stance Treatment Tables are durable, attractive and boast a 750lb weight rating, and are available in a refreshing range of design options including Vinyl, laminate and powdercoat colors.

## Features

- Limited Lifetime Warranty
- 3 Models available: Shelf, no Shelf, Shelf & Storage Drawers
- 750lb static load weight rating
- Seamless, easy-to-clean healthcare grade vinyl top
- Oversized height-adjustable leveling glides

## Options

- Pneumatic spring-assisted elevating backrest
- Custom Vinyl, laminate and powdercoat finishes
- Custom heights available
- CalTB 133 Compliance
- Moisture Barrier



## features



Proprietary "quick-change" paper holder



Optional drawer unit provides ample storage



Adjustable levelling glides ensure a level surface in spite of uneven floors

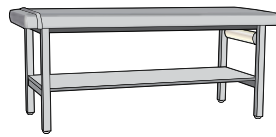


Available in many powdercoat, laminate and vinyl surfaces

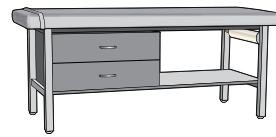
# Statement of Line



**Treatment table**  
W 71  
D 28  
H 30



**Treatment table with shelf**  
W 71  
D 28  
H 30



**Treatment table with shelf and drawer unit**  
W 71  
D 28  
H 30

\* Optional adjustable head rest available for each model

## Standard vinyl selections:



River Rock



Sand Grey



Mocha



Adobe



Sage



Steel Blue



Midnight Blue



Onyx

## Standard laminate selections:



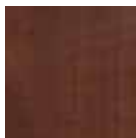
Hardrock  
Maple (HM)



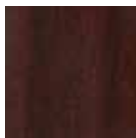
Candlelight  
(CL)



Rustic Cherry  
(RC)



Summer Flame  
(SF)



Mahogany  
(MA)



Cherry  
Blossom (CB)



Grenada  
(GR)



Chocolate  
(CH)

## Standard powdercoat finish:



Smooth Silver

\* Many other vinyl, laminate and powdercoat finishes available on request.  
To view these, please visit our website at [stancehealthcare.com](http://stancehealthcare.com)



**STANCE | HEALTHCARE**

45 Goodrich Drive | Kitchener, ON N2C 0B8 | tel 1.877.395.2623 | fax 1.877.395.6270 | [stancehealthcare.com](http://stancehealthcare.com)  
S06-17 | © Stance Healthcare Inc. all rights reserved.

