

accent

healthcare seating collection



accent

Accentuate your space with the Accent stacking chair. The versatile Accent is available with or without arms and is well-suited to waiting areas, patient rooms, cafeterias and administrative spaces. Accent is comfortable, efficient and durable enough to withstand intensive use.

Features

- Limited lifetime warranty
- 14-gauge steel frame powder-coated in a range of finishes
- Exceeds BIFMA Seating Durability test to 500 lb.
- Available in 3 seat widths: 18.5", 22" and 26"
- Chair back contoured for enhanced comfort
- Waterfall front edge design enhances comfort and eliminates a potential pinch point
- Stacks 6 high on the floor and 10 high on dolly
- Collection includes coordinating side tables

Options

- Custom frame finishes
- Custom wood back finishes
- Contrasting fabrics
- Ganging clip
- CAL TB 133 Compliance
- Moisture barrier
- Wall-Saver frame design
- Chair Dolly (stacks 10 chairs high)



Stance Healthcare seating products are Level Certified. To learn more, visit www.levelcertified.org.



features



Compound-curved back provides a snug fit



Double-stitch method increases durability and provides a cleaner appearance



Wood back design



Backrest available in three unique cut-out designs. Custom cut-outs also available.



“Waterfall” front edge design enhances comfort and eliminates a potential pinch point.



Chair design allows for easy cleaning and eliminates potential bacteria traps.

Statement of Line



Wood back finish selection:



Hardrock
Maple (HM)



Candlelight
(CL)



Rustic Cherry
(RC)



Summer Flame
(SF)



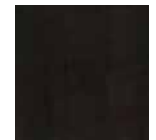
Havana
(HA)



Mahogany
(MA)



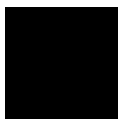
Grenada
(GR)



Chocolate
(CH)

Metal frame finish selection:

**Custom frame finishes available on request*



Smooth
Black



Textured
Black



Textured
Nickel



Smooth
Silver



Gunmetal



Metallic
Beige

Arm color selection:



Black



Grey



Taupe

Standard cut-out options:



Oval



Squares



Flute

**Custom cut-out also available*



All Accent chair models may be specified with upholstered back or wood back



STANCE | HEALTHCARE

45 Goodrich Drive Kitchener, ON N2C 0B8 tel 1.877.395.2623 fax 1.877.395.6270 stancehealthcare.com

S13-20 © Stance Healthcare Inc. all rights reserved.

