

accent jr.

children's seating collection



accent jr.

The versatile Accent Jr. stacking chair is available with upholstered or wood back and is a perfect fit for pediatric spaces such as waiting areas, lounges and patient rooms. Accent Jr. is comfortable, efficient and durable enough to withstand intensive use. Coordinating tables provide children with a creative activity space during their stay.

Features

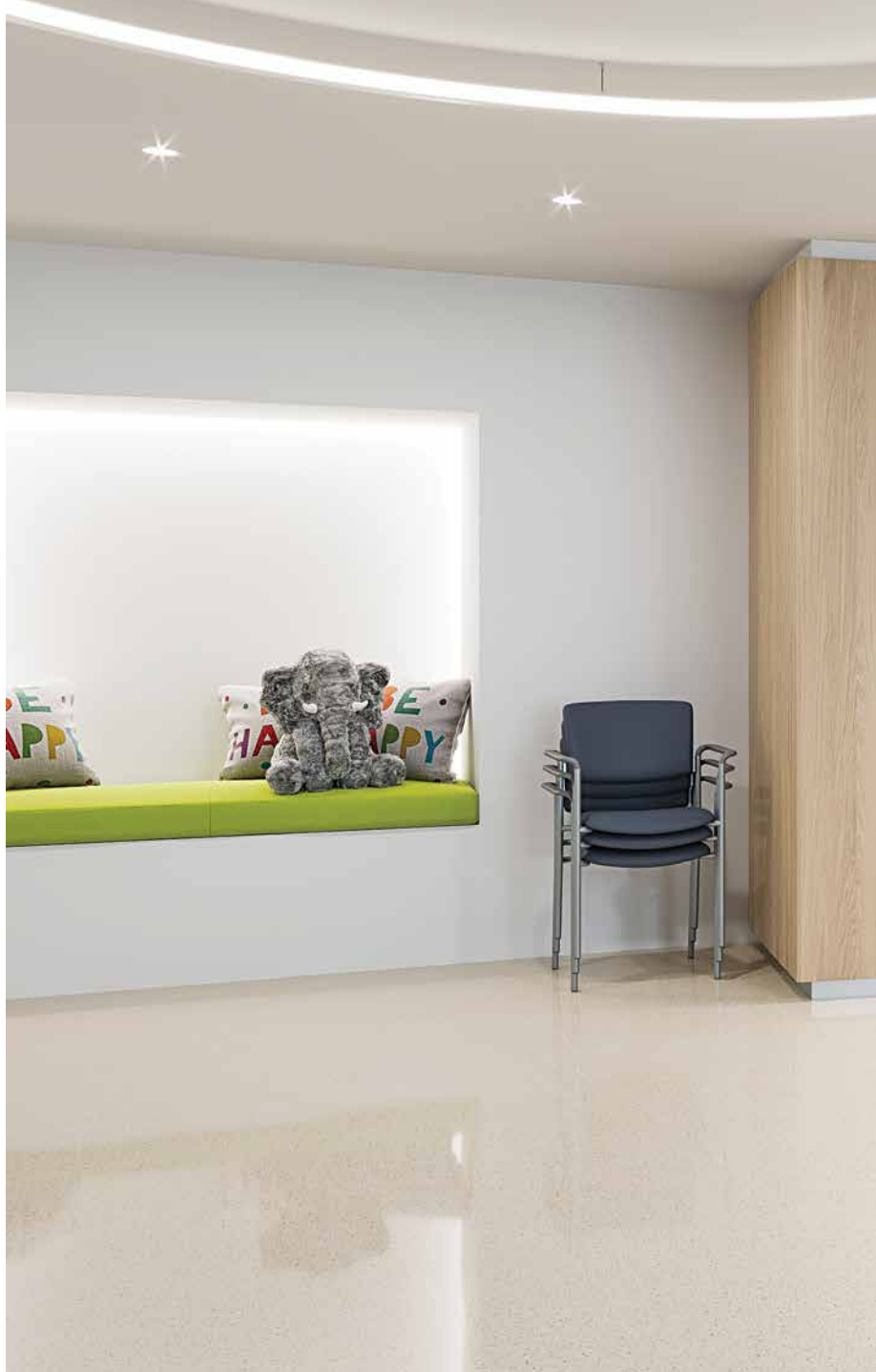
- Limited lifetime warranty
- 14-gauge steel frame powder-coated in a range of finishes
- Exceeds BIFMA Seating Durability test to 500 lb.
- Contoured back and waterfall seat design enhance comfort
- Collection includes coordinating activity tables

Options

- Custom frame finishes
- Custom wood back finishes
- Contrasting fabrics
- CAL TB 133 Compliance
- Moisture barrier



Stance Healthcare seating products are Level Certified. To learn more, visit www.levelcertified.org.



features



Compound-curved back provides a snug fit



Leg design eliminates plastic cap for increased safety



Wood back available in eight standard finishes.
Custom cut-outs and etching also available



"Waterfall" front edge design enhances comfort

Statement of Line



Upholstered back
 W 15.5
 D 16
 H 24
 Seat H 14.75
 Seat W 14



Wood back
 W 15.5
 D 16
 H 24
 Seat H 14.75
 Seat W 14



Activity table - oval
 21" x 40" x 22"



Activity table - round
 24" diameter x 22" H
 30" diameter x 22" H
 36" diameter x 22" H



Activity table - square
 24" x 24" x 22"
 36" x 36" x 22"



Activity table - kidney
 21" x 40" x 22"

*Custom cut outs and etching available for wood back models.

Wood back finish selection:



Hardrock
 Maple (HM)



Candlelight
 (CL)



Rustic Cherry
 (RC)



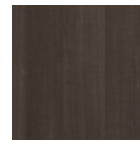
Summer Flame
 (SF)



Havana
 (HA)



Mahogany
 (MA)

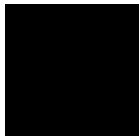


Grenada
 (GR)



Chocolate
 (CH)

Metal frame finish selection: **Custom frame finishes available on request*



Smooth Black



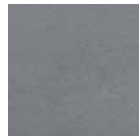
Textured Black



Textured Nickel



Smooth Silver



Gunmetal



Metallic Beige



Round table with Accent Jr. chairs



STANCE | HEALTHCARE

45 Goodrich Drive Kitchener, ON N2C 0B8 tel 1.877.395.2623 fax 1.877.395.6270 stancehealthcare.com
 S02-19 © Stance Healthcare Inc. all rights reserved.

