

banner

healthcare seating collection



banner

The Banner seating collection offers a clean simplistic aesthetic, with an economical construction ideally suited for clinical spaces and medical offices.

Features

- Clean-out space between seat and back
- Upholstered seat cushion is field replaceable
- Available in 4 seat widths and 2-seat and 3-seat tandem units
- Limited lifetime warranty
- Available with coordinating occasional tables

Options

- Custom wood frame finishes
- Contrasting fabrics
- CAL TB 133 compliance
- Moisture barrier
- Polyurethane armcaps



statement of line



Single chair
21" seat



Single chair
24" seat



Bariatric chair
31" seat



Settee chair
42" seat



Hip chair



Two-seater with full center arm



Three-seater with full center arms

Statement of Line



**Single chair
21" seat**
W 23.5
D 21
H 32
Seat H 18
Seat W 21
Arm H 26



**Single chair
24" seat**
W 27.5
D 21
H 32
Seat H 18
Seat W 24
Arm H 26



**Bariatric chair
31" seat**
W 33.5
D 21
H 32
Seat H 18
Seat W 31
Arm H 26



**Settee chair
42" seat**
W 44.5
D 42
H 32
Seat H 18
Seat W 21
Arm H 26



Hip chair
W 23.5
D 25.5
H 37.75
Seat H 24
Seat W 21
Arm H 31.25



**Two-seater with
full center arm**
W 45
D 21
H 32
Seat H 18
Seat W 21
Arm H 26

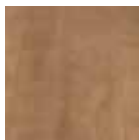


**Three-seater with
full center arms**
W 67.5
D 21
H 32
Seat H 18
Seat W 21
Arm H 26

Wood finish selection:



Hardrock
Maple (HM)



Candlelight
(CL)



Rustic Cherry
(RC)



Summer Flame
(SF)



Mahogany
(MA)



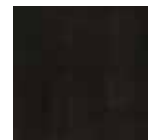
Cherry
Blossom (CB)



Havana
(HA)

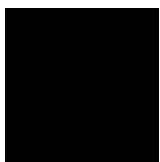


Grenada
(GR)



Chocolate
(CH)

Polyurethane arm cap finishes:



Black



Grey



Taupe



STANCE | HEALTHCARE

45 Goodrich Drive Kitchener, ON N2C 0B8 tel 1.877.395.2623 fax 1.877.395.6270 stancehealthcare.com

S02-19 © Stance Healthcare Inc. all rights reserved.

