

# kalarne

lounge collection



# kalarne

Reminiscent of a time gone by, Kalarne Lounge seating creates an aura of mid-century contemporary styling. Combining a classical, residential aesthetic and a highly comfortable sit, Kalarne is ideal for today's healthcare spaces. Kalarne Lounge chair can also be combined with the Kalarne love-seat and three-seat sofa for a continuous aesthetic.

## Features

- Removable seat deck for easy cleaning
- Flow-through area sealed with moisture resistant vinyl
- Seat cover features seamless front for increased durability
- Non-marring glides

## Options

- Contrasting fabrics
- Custom wood leg finishes
- CAL TB 133 Compliance
- Moisture Barrier



Stance Healthcare seating products are Level Certified. To learn more, visit [www.levelcertified.org](http://www.levelcertified.org).



## features



Removable seat deck enables ease of cleaning



Seat cover features seamless front for increased durability



Attention to detail is evident in superb craftsmanship

# Statement of Line



**Lounge chair**  
 W 29  
 D 31.5  
 H 34.5  
 Seat H 17.5  
 Seat W 20.5



**Two seater**  
 W 50  
 D 32.5  
 H 34.5  
 Seat H 17.5  
 Seat W 20.5



**Three seater**  
 W 70  
 D 32.5  
 H 34.5  
 Seat H 17.5  
 Seat W 20.5



Kalarne lounge chair with Chocolate leg finish

## Wood leg finish selection:



Hardrock  
Maple (HM)



Candlelight  
(CL)



Rustic Cherry  
(RC)



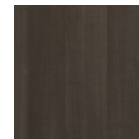
Summer Flame  
(SF)



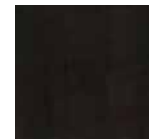
Havana  
(HA)



Mahogany  
(MA)



Grenada  
(GR)



Chocolate  
(CH)



**STANCE | HEALTHCARE**

45 Goodrich Drive Kitchener, ON N2C 0B8 tel 1.877.395.2623 fax 1.877.395.6270 stancehealthcare.com  
 S02-19 © Stance Healthcare Inc. all rights reserved.

