

kite

metal folding chair



kite metal

Kite is ideal for patient rooms and virtually any area where space is at a premium. Available in 16" and 18" seat widths, Kite is lightweight, highly durable and can be conveniently folded and stored on a wall bracket when not in use.

Features

- Limited Lifetime Warranty
- Powdercoated steel frame constructed of 14 and 16 gauge material
- Contoured back and waterfall seat design provide comfortable sit
- Seat and back cushions are replaceable if necessary
- Chair depth when mounted to wall is 7.5"
- Available in 16" and 18" seat widths

Options

- Custom frame finishes
- Contrasting fabrics
- CALTB 133 Compliance
- Moisture Barrier
- Protective wall bumper on chair back
- Also available in wood frame



features:



Bracket allows chair to mount tightly against the wall



Contoured seat and back cushions provide ergonomic comfort



Frame design eliminates pinch points and risk of chair folding unintentionally



Waterfall seat design provides comfortable sit

Statement of Line



Kite Metal Folding Chair
16" seat width
Model No. KT400
 W 19
 D 22
 H 34
 Seat H 18
 Seat W 16
 Weight 19



Kite Metal Folding Chair
18" seat width
Model No. KT500
 W 21
 D 22
 H 34
 Seat H 18
 Seat W 18
 Weight 20



Wall Mount Bracket
Model No. KICWB
 W 7.5
 D 2.5
 H 6

Dimensions:



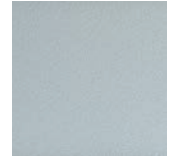
Metal frame finish selection:



Smooth Black



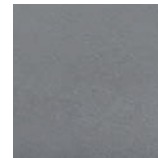
Textured Black



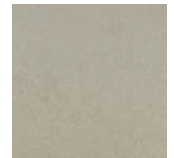
Textured Nickel



Smooth Silver



Gunmetal



Metallic Beige

Kite folding chair is also available in wood



STANCE | HEALTHCARE

45 Goodrich Drive Kitchener, ON N2C 0B8 tel 1.877.395.2623 fax 1.877.395.6270 stancehealthcare.com
 S01-18 © Stance Healthcare Inc. all rights reserved.

