

marna

healthcare seating collection



marna

The Marna Healthcare Seating Collection combines modern, minimalist aesthetics with robust engineering methods that exceed all necessary requirements for outstanding performance in healthcare environments.

Features

- Limited Lifetime Warranty
- 14-gauge internal steel seat frame for enhanced structural integrity
- Seat and back upholstery covers are removable for cleaning
- Wood side frames are field-replaceable should they get damaged
- All configurations available in 21" and 24" seat widths
- Wall saver leg design protects walls from damage
- Clean-out space between seat and back

Options

- Flex-back option available on 21" and 24" guest and patient chairs
- Choice of polyurethane or solid surface arm caps
- Custom wood frame finishes
- Contrasting fabrics
- CAL TB 133 Compliance
- Moisture Barrier



Stance Healthcare seating products are Level Certified. To learn more, visit www.levelcertified.org.



features



Optional arm cap available in choice of polyurethane or solid surface



Ample spacing between seat and back enables easier cleaning



C
g



Optional flex-back available on guest and patient chair models



Wall saver rear leg design prevents damage to walls



Seat and back upholstery covers are removable for easy cleaning or replacement

Statement of Line



**Guest chair
(21" seat width)**
W 23.75
D 27.5
H 35
Seat H 18.5
Seat W 21
Arm H 26.5



**Guest chair
(24" seat width)**
W 26.75
D 27.5
H 35
Seat H 18.5
Seat W 21
Arm H 26.5



**Bariatric chair
(31" seat width)**
W 33.75
D 26.5
H 35
Seat H 18.5
Seat W 31
Arm H 26



**Hip chair
(21" seat width)**
W 24.75
D 28.5
H 41.25
Seat H 25
Seat W 21
Arm H 33



**Patient chair
(21" seat width)**
W 23.75
D 27.5
H 35
Seat H 18.5
Seat W 21
Arm H 26.5



**Patient chair
(24" seat width)**
W 26.75
D 27.5
H 35
Seat H 18.5
Seat W 21
Arm H 26.5



**2 seater, no
center arm**
W 44.75
D 27.5
H 35
Seat H 18.5
Seat W 21
Arm H 26.5



**2 seater,
full center arm**
W 46.75
D 27.5
H 35
Seat H 18.5
Seat W 21
Arm H 26.5



**Settee chair
(42" seat width)**
W 44.75
D 27.5
H 35
Seat H 18.5
Seat W 21
Arm H 26.5



**3 seater, no
center arms**
W 66.25
D 27.5
H 35
Seat H 18.5
Seat W 21
Arm H 26.5



**3 seater,
full center arms**
W 69.25
D 27.5
H 35
Seat H 18.5
Seat W 21
Arm H 26.5

*2 and 3 seaters available in 21" and 24" seat widths



**Single
bench**
W 23.75
D 27.75
Seat H 18
Seat W 21



**Bariatric
single bench**
W 33.75
D 27.75
Seat H 18
Seat W 31



**Two seater
bench**
W 44.75
D 27.75
Seat H 18
Seat W 42



**Three seater
bench**
W 65.75
D 27.75
Seat H 18
Seat W 63



**Radius connecting
corner table**
W 28
D 28
H 17



**Square connecting
corner table
(includes leg)**
W 28
D 28
H 17



**Square connecting
spacer table**
W 22
D 22
H 17

Wood finish selection:



Hardrock
Maple (HM)



Candlelight
(CL)



Rustic Cherry
(RC)



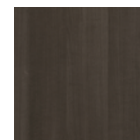
Summer Flame
(SF)



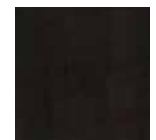
Havana
(HA)



Mahogany
(MA)

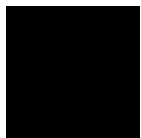


Grenada
(GR)



Chocolate
(CH)

Polyurethane arm cap selection:



Black



Grey



Taupe



Marna Collection includes freestanding benches, available in 4 sizes.



STANCE | HEALTHCARE

45 Goodrich Drive Kitchener, ON N2C 0B8 tel 1.877.395.2623 fax 1.877.395.6270 stancehealthcare.com
S04-19 © Stance Healthcare Inc. all rights reserved.

