

noble

dining chair





Overall Height: 36
 Seat Height: 19
 Arm Height: 27
 Width between Arms: 20

noble

Designed with straight lines and a trim but sturdy frame, Noble can serve as dining, reception or occasional seating. Ample spacing between the square seat and back enhances clean-ability. Like all Stance wood-frame chairs, Noble is constructed of European Beech Hardwood which can be specified in our seven standard finishes.



Construction Specifications:

- Frames constructed from kiln-dried European Beech hardwood
- Mortise & Tenon joints throughout (no dowels)
- Joints reinforced with 18 gauge nails and low root woodscrews
- Seat construction features Tongue & Groove corner block system
- Glue used is specially formulated for Beech hardwood

Wood finish selections:



Hardrock Maple (HM)



Candlelight (CL)



Rustic Cherry (RC)



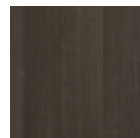
Summer Flame (SF)



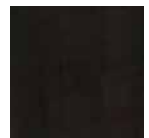
Havana (HA)



Mahogany (MA)



Grenada (GR)



Chocolate (CH)



STANCE | HEALTHCARE

45 Goodrich Drive Kitchener, ON N2C 0B8 tel 1.877.395.2623 fax 1.877.395.6270 stancehealthcare.com
 S03-19 © Stance Healthcare Inc. all rights reserved.

