

# carson

lounge seating collection



# carson

Carson Lounge Seating Collection offers a clean, rectilinear profile that conceals a structural steel framework and ensures a high level of durability.

## Features

- Limited Lifetime Warranty
- 14-gauge steel framework provides enhanced structural integrity
- Concealed clean-out space between seat and back
- Nylon glides protect floors from damage
- No visible fasteners

## Options

- Choice of wood, rigid polyester, polyurethane or solid surface arm caps
- Power/USB options
- Choice of wood or powder coated steel leg
- Custom leg and arm cap finishes
- Contrasting fabrics
- CAL TB 133 Compliance
- Moisture Barrier



Stance Healthcare seating products are Level Certified. To learn more, visit [www.levelcertified.org](http://www.levelcertified.org).



## features



No visible fasteners



Low profile nylon glides protect floor from damage



Choice of wood or powdercoated steel leg



Attention to detail is evident in superb craftsmanship

# Statement of Line



\*Available in choice of wood or metal leg

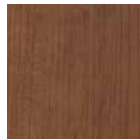
## Wood leg finish selections:



Hardrock  
Maple (HM)



Candlelight  
(CL)



Rustic Cherry  
(RC)



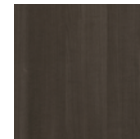
Summer Flame  
(SF)



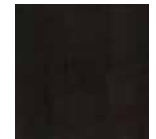
Havana  
(HA)



Mahogany  
(MA)



Grenada  
(GR)



Chocolate  
(CH)

## Metal leg finish selections:



Smooth Black  
(SB)



Textured Black  
(TB)



Textured Nickel  
(TN)



Smooth Silver  
(SS)

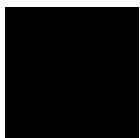


Gunmetal  
(GM)



Metallic Beige  
(MB)

## Polyurethane arm cap finishes:



Black (PB)



Grey (PG)



Taupe (PT)

## Rigid polyester arm cap finishes:



Black (EB)



Grey (EG)



Taupe (ET)



White (EW)



STANCE | HEALTHCARE

45 Goodrich Drive Kitchener, ON N2C 0B8 tel 1.877.395.2623 fax 1.877.395.6270 stancehealthcare.com  
 S01-19 © Stance Healthcare Inc. all rights reserved.

