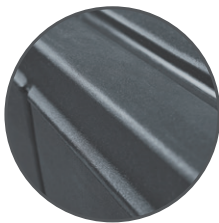


Specifying Furniture for High-Risk Patient Areas

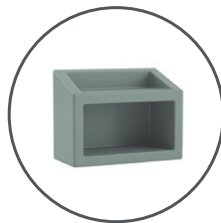
In behavioral health facilities, rooms are typically designated certain risk areas – low, medium, and high. In typical high-risk areas, patients can be difficult to manage, or there is the risk of solitary and/or unsupervised use. One of the most common high-risk areas includes patient bedrooms where special consideration must be given to durability, comfort, and safety when specifying furniture.

Stance Healthcare wants to ensure a safe and comfortable environment for all Mental and Behavioral Health patients. Below you'll find our recommended features and options to look for when specifying furniture for high-risk areas.

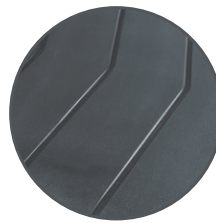
Rounded corners for increased safety



Ligature-resistant features that support a safer environment for patients



Innovative designs that make furniture easier to clean

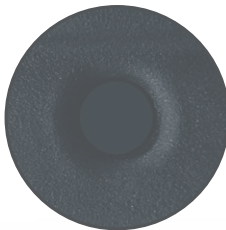


fluid management system

An aesthetically pleasing design that provides patients with dignity and comfort



Floor-mount options that support a safer environment for patients and caregivers



Weighted to deter misuse



Manufactured with material that provides maximum durability



NIGHTINGALE AWARDS 2019

Gold Award
#AwardWinningFrontier

