

# verity

lounge seating for behavioral health



# verity bh

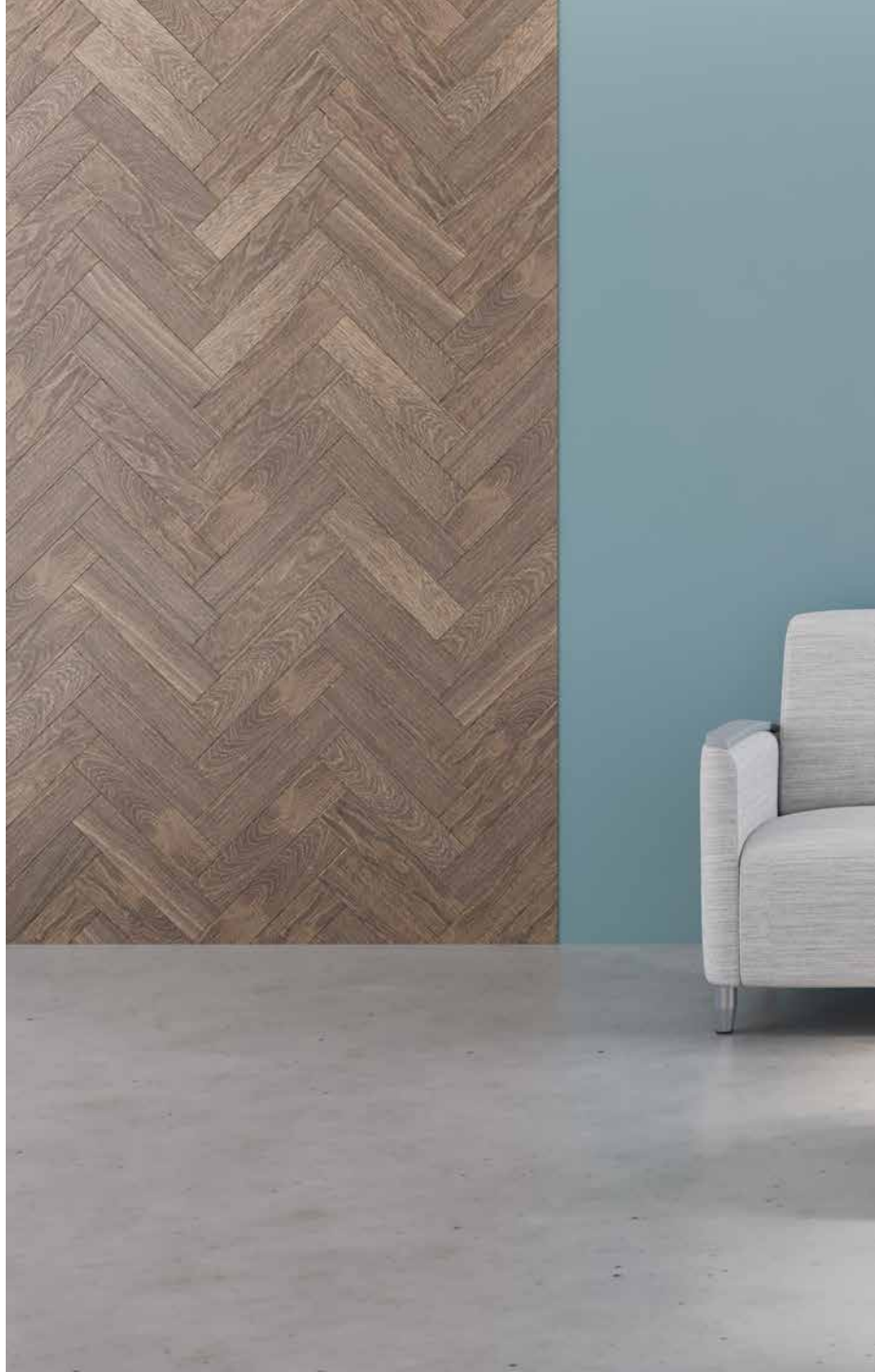
The Verity Collection for Behavioral Health is lounge furniture designed to provide a home-like furniture aesthetic while satisfying the stringent requirements of safety, durability and cleanliness.

## Features

- Limited Lifetime Warranty
- Product lineup also includes 2-seat and 3-seat units
- No exposed fasteners
- No exposed upholstery staples
- Non-removable seat cushion
- Non-removable steel legs
- Seat cover features seamless front for increased durability

## Options

- Optional wood, polyurethane, rigid polyester or solid surface arm caps available
- Contrasting fabrics
- CAL TB 133 Compliance
- Moisture Barrier



## features



Seat cover features seamless front for increased durability



Non-removable metal legs



Optional wood, polyurethane, rigid polyester  
or solid surface arm caps



No exposed upholstery staples

# Statement of Line



**Lounge chair**  
 W 31  
 D 30  
 H 34  
 Seat H 18  
 Seat W 23.5  
 Arm H 25



**Two seat sofa**  
 W 53  
 D 30  
 H 34  
 Seat H 18  
 Seat W 46.5  
 Arm H 25

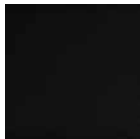


**Three seat sofa**  
 W 76.5  
 D 30  
 H 34  
 Seat H 18  
 Seat W 69.5  
 Arm H 25

## Metal leg finish selections:



Smooth Black  
(SB)



Textured Black  
(TB)



Textured Nickel  
(TN)



Smooth Silver  
(SS)



Gunmetal  
(GM)



Metallic Beige  
(MB)

## Wood arm finish selections:



Hardrock  
Maple (HM)



Candlelight  
(CL)



Rustic Cherry  
(RC)



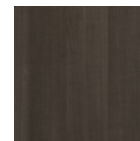
Summer Flame  
(SF)



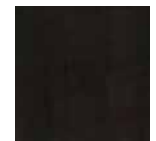
Havana  
(HA)



Mahogany  
(MA)



Grenada  
(GR)



Chocolate  
(CH)

## Polyurethane arm cap finishes:



Black (PB)



Grey (PG)



Taupe (PT)

## Rigid polyester arm cap finishes:



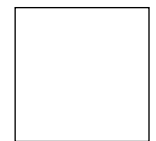
Black (EB)



Grey (EG)



Taupe (ET)



White (EW)



STANCE | HEALTHCARE

45 Goodrich Drive Kitchener, ON N2C 0B8 tel 1.877.395.2623 fax 1.877.395.6270 stancehealthcare.com  
 S01-19 © Stance Healthcare Inc. all rights reserved.

