



Onward
Wood Seating Collection

Onward embodies a soft, transitional design that will complement virtually any healthcare lobby or waiting environment.



onward



ONG21-OA
21" Guest Chair, open arms
W 24.5 D 25 H 34.25
Seat W 21 H 18.5
Arm H 26.5



ONG21-CA
21" Guest Chair, closed arms
W 24.5 D 25 H 34.25
Seat W 21 H 18.5
Arm H 26.5



ONG24-OA
24" Guest Chair, open arms
W 27.5 D 25 H 34.25
Seat W 24 H 18.5
Arm H 26.5



ONG24-CA
24" Guest Chair, closed arms
W 27.5 D 25 H 34.25
Seat W 24 H 18.5
Arm H 26.5



ONB31-OA
Bariatric Chair, open arms
W 34.5 D 25 H 34.25
Seat W 31 H 18.5
Arm H 26.5



ONB31-CA
Bariatric Chair, closed arms
W 34.5 D 25 H 34.25
Seat W 31 H 18.5
Arm H 26.5



ONH21-OA
Hip Chair, open arms
W 24.5 D 25 H 39.25
Seat W 21 H 23.5
Arm H 31.5



ONH21-CA
Hip Chair, closed arms
W 24.5 D 25 H 39.25
Seat W 21 H 23.5
Arm H 31.5



ONP21-OA
21" Highback Chair, open arms
W 24.5 D 25 H 44.25
Seat W 21 H 18.5
Arm H 26.5



ONP21-CA
21" Highback Chair, closed arms
W 24.5 D 25 H 44.25
Seat W 21 H 18.5
Arm H 26.5



ONP24-OA
24" Highback Chair, open arms
W 27.5 D 25 H 44.5
Seat W 24 H 18.5
Arm H 26.5



ONP24-CA
24" Highback Chair, closed arms
W 27.5 D 25 H 44.5
Seat W 24 H 18.5
Arm H 26.5



ONP31-OA
31" Highback Chair, open arms
W 33.5 D 26.5 H 45.5
Seat W 31 H 18.5
Arm H 26



ONP31-CA
31" Highback Chair, closed arms
W 33.5 D 26.5 H 45.5
Seat W 31 H 18.5
Arm H 26



ONFR
Foot Rest
W 19 D 15 H 13



ONS-42-OA
Settee, open arms
W 45.5 D 25 H 34.25
Seat W 42 H 18.5
Arm H 26.5



ONS-42-CA
Settee, closed arms
W 45.5 D 25 H 34.25
Seat W 42 H 18.5
Arm H 26.5



ON221N-OA
21" Two-seat, no center arms, open arms
W 45.5 D 25 H 34.25
Seat W 21 H 18.5
Arm H 26.5



ON221N-CA
21" Two-seat, no center arms, closed arms
W 45.5 D 25 H 34.25
Seat W 21 H 18.5
Arm H 26.5



ON224N-OA
24" Two-seat, no center arms, open arms
W 51.5 D 25 H 34.25
Seat W 24 H 18.5
Arm H 26.5



ON224N-CA
24" Two-seat, no center arms, closed arms
W 51.5 D 25 H 34.25
Seat W 24 H 18.5
Arm H 26.5



ON221F-OA
21" Two-seat, full center leg, open arms
W 47.5 D 25 H 34.25
Seat W 21 H 18.5
Arm H 26.5



ON221F-CA
21" Two-seat, full center leg, closed arms
W 47.5 D 25 H 34.25
Seat W 21 H 18.5
Arm H 26.5



ON224F-OA
24" Two-seat, full center leg, open arms
W 53.5 D 25 H 34.25
Seat W 24 H 18.5
Arm H 26.5



ON224F-CA
24" Two-seat, full center leg, closed arms
W 53.5 D 25 H 34.25
Seat W 24 H 18.5
Arm H 26.5



ON321N-OA
21" Three-seat, no center arms, open arms
W 67 D 25 H 34.25
Seat W 21 H 18.5
Arm H 26.5



ON321N-CA
21" Three-seat, no center arms, closed arms
W 67 D 25 H 34.25
Seat W 21 H 18.5
Arm H 26.5



ON324N-OA
24" Three-seat, no center arms, open arms
W 76 D 25 H 34.25
Seat W 24 H 18.5
Arm H 26.5



ON324N-CA
24" Three-seat, no center arms, closed arms
W 76 D 25 H 34.25
Seat W 24 H 18.5
Arm H 26.5



ON321F-OA
21" Three-seat, full center legs, open arms
W 70 D 25 H 34.25
Seat W 21 H 18.5
Arm H 26.5



ON321F-CA
21" Three-seat, full center legs, closed arms
W 70 D 25 H 34.25
Seat W 21 H 18.5
Arm H 26.5



ON324F-OA
24" Three-seat, full center legs, open arms
W 78 D 25 H 34.25
Seat W 24 H 18.5
Arm H 26.5



ON324F-CA
24" Three-seat, full center legs, closed arms
W 78 D 25 H 34.25
Seat W 24 H 18.5
Arm H 26.5



ONB-21
Single Bench
W 24.5 D 25 H 18
Seat W 21 H 18
Arm H 24



ONB-31
Bariatric Bench
W 34.5 D 25 H 18
Seat W 31 H 18
Arm H 24



ONB-42
Two-seat Bench
W 45.5 D 25 H 18
Seat W 42 H 18
Arm H 24



ONB-63
Three-seat Bench
W 67 D 25 H 18
Seat W 63 H 18
Arm H 24



VF-222217
22" x 22" Square Table
W 22 D 22 H 17



VF-223617
22" x 36" Rectangular Table
W 36 D 22 H 17



VF-224817
22" x 48" Rectangular Table
W 48 D 22 H 17



UCT-90R
Radius Corner Table
W 28 D 28



UCT-90S
Square Corner Table
W 28 D 28



UCT-SP
Square Spacer Table
W 22 D 22

FEATURES –

- Limited Lifetime Warranty
- 14-gauge internal steel seat frame for enhanced structural integrity
- Seat and back upholstery covers are removable for cleaning
- Wood side frames are field-replaceable should they get damaged
- Single guest and patient chairs available in 21", 24" and 31" seat widths
- Wallsaver leg design protects walls from damage
- Clean-out spacing between seat and back

OPTIONS –

- Flex-back option available on 21" and 24" guest and patient chairs
- Polyurethane armcap
- Choice of round or square back shape
- Custom wood frame finishes
- Contrasting fabrics
- CAL TB 133 compliance
- Moisture barrier

WOOD FINISHES –



Hardrock
Maple



Candlelight



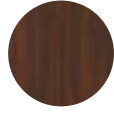
Rustic
Cherry



Summer
Flame



Mahogany



Havana



Grenada



Chocolate

POLYURETHANE ARM CAP FINISHES –



Black



Gray



Taupe

Onward