

Kite

Metal Seating Collection

When ordering this product, specification codes must be added to unit Model Number, as shown below.

NOTE: Upholstery and/or additional options must be specified separately.

Kite



METAL FRAME
FINISH -

MODEL
NUMBER -

METAL FRAME
FINISH -

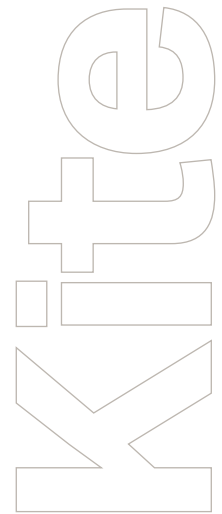
KT400 -SS

- GM** Gunmetal
- MB** Metallic Beige
- SB** Smooth Black
- SS** Smooth Silver
- TB** Textured Black
- TN** Textured Nickel

Kite

Metal Seating Collection

Different fabrics may be specified on the seat and on the back. In this case, use the higher grade of the two. No additional upcharge applies. All prices are in US dollars (USD).



KT400

DESCRIPTION –

Metal Folding Chair

16" seat width



DIMENSIONS –

Width 19

Depth 22

Height 34

Seat Width 16

Seat Depth 16.5

Seat Height 18

COM Yard Back 0.5

COM Yard Seat 0.5

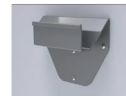
Cubic Feet 8

Ship Weight 19

OPTIONS –

Moisture barrier +35

Wall mount bracket (KICWB) +145



WALL MOUNT BRACKET
W 7.5 D 2.5 H 6

MODEL NO.	COM/1	2	3	4	5	6	7	8
KT400	817	864	910	957	1003	1049	1096	1142

KT500

DESCRIPTION –

Metal Folding Chair

18" seat width



DIMENSIONS –

Width 21

Depth 22

Height 34

Seat Width 18

Seat Depth 16.5

Seat Height 18

COM Yard Back 0.5

COM Yard Seat 0.5

Cubic Feet 9

Ship Weight 20

OPTIONS –

Moisture barrier +35

Wall mount bracket (KICWB) +145



WALL MOUNT BRACKET
W 7.5 D 2.5 H 6

MODEL NO.	COM/1	2	3	4	5	6	7	8
KT500	922	976	1029	1082	1136	1187	1243	1297