



enviroleather™

- California
- Berkshire 2.0
- Montana

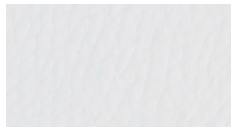
envirohyde™

- Wyoming

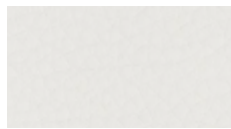
enviroleather™ California

www.lidiinteriors.com

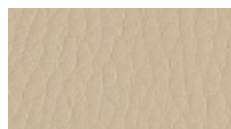
Click on the image to order a memo sample.



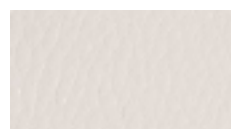
White 970



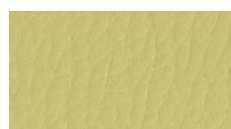
Bone 1000



Cattail 968



Blush Pink 1001



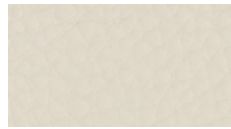
Pear 922



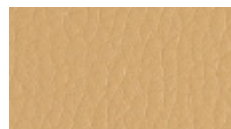
Chambray 1012



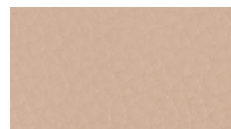
Misty Gray 939



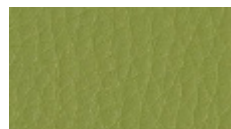
Linen 998



Camel 941



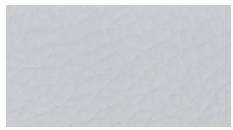
Apricot 1002



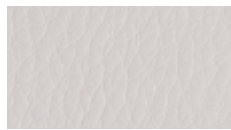
Napa 964



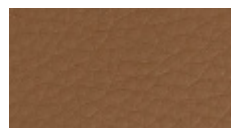
Bermuda 945



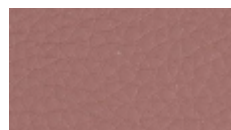
Silver Lake 953



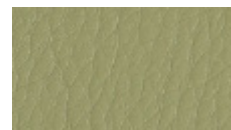
Warm Gray 918



Toasted Almond 929



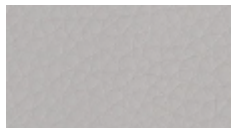
Rosewood 1003



Olive 924



Jamaica 944



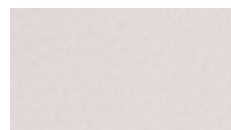
Dovetail 925



Harbor Gray 917



Cinnamon 979



Cotton Candy 1017



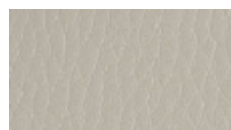
Kale 1008



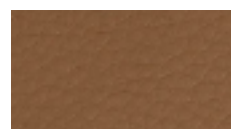
Bluebird 1013



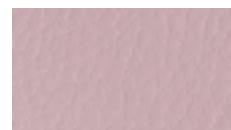
Cool Gray 919



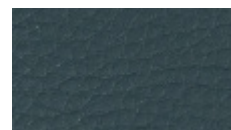
Mushroom 946



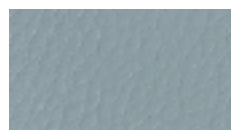
Mojave 954



Berry Mousse 1018



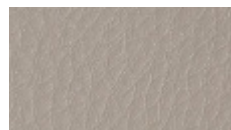
Juniper 952



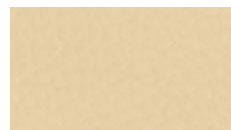
River Rock 973



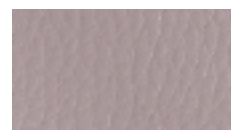
Flagstone 940



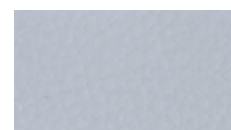
Cross Grove 999



Wild Honey 1024



Raisin 1004



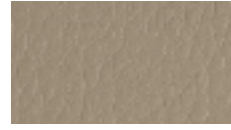
French Lilac 1021



Galapagos 1016



Pewter 942



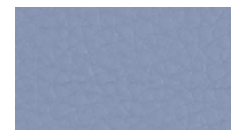
Gray Mare 969



Marigold 996



Mulberry 1005



Twilight 1022



Baja 955



Mammoth 957



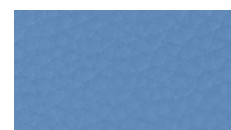
Teak 910



Mango 983



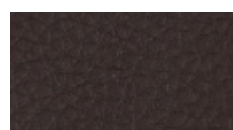
Rose 1019



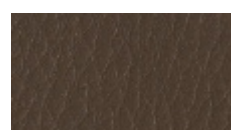
Carolina 992



Lagoon 947



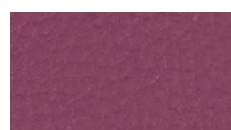
Storm 960



Bark 938



Rust 902



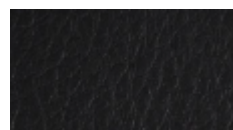
Rhododendron 1025



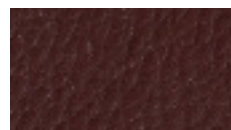
Grapevine 956



Cobalt 914



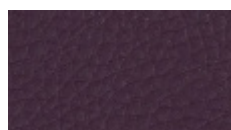
Black 951



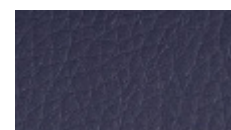
Merlot 926



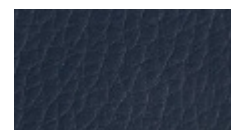
Beet 934



Wine 959



Plum 961



Navy 936

enviroleather™ Berkshire 2.0

www.lidiinteriors.com
Click on the image to order a memo sample.



Sand Dune 111



Clay 112



Fawn 114



Amber 113



Mahogany 117



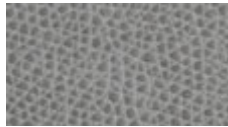
Obsidian 118



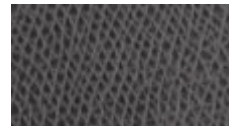
Gray Marble 119



Cobblestone 115



Calcite 122



Onyx 110



Opal 125



Amethyst 126



Topaz 123



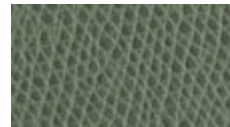
Jasper 116



Blue Apatite 124

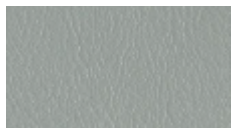


Field Mist 120



Kingdom 121

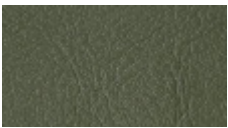
enviroleather™ Montana



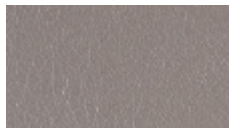
Sea Glass 764



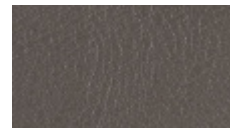
Spanish Moss 765



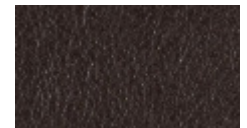
Laurel 760



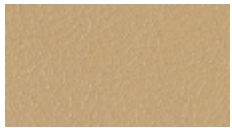
Quarry Rock 739



Charcoal 704



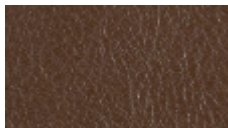
Rocky Mtn. 707



Mocassin Trail 709



Ranchwood 736



Choc. Mousse 750



Redwood 763



Sun Dried Tom. 766



Grappa 762



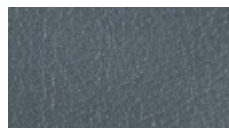
Blue Heron 740



Tribal Teal 738



Mtn. Indigo 741



Gray Slate 737

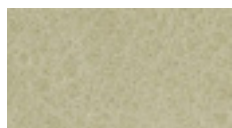


Grizzly Gray 752

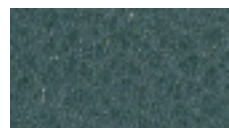


Midnight 701

envirohyde™ Wyoming



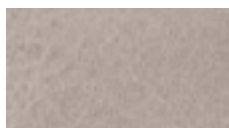
Honeydew 806



Ivy 808



Cascades 812



Organdy Blush 801



Dusty Mauve 802



Chile 804



Ash 800



Gray Flannel 803



Blue Bayou 816



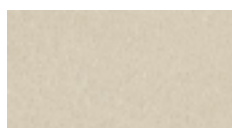
Marine 813



Deep Olive 815



Black Raspberry 814



Taupe 805



Chestnut 807



Bison 810



Java 811



Smoke 809

enviroleather™ & envirohyde™

Pattern		EnviroLeather™ Berkshire 2.0	EnviroLeather™ California / Montana	EnviroHyde™ Wyoming
Content		50% TPE / 50% Polyester	50% TPE / 50% Polyester	55% PC PU / 45% Nylon
Width		54 inches	54 inches	54 inches
Abrasion	Wyzenbeek ASTM D-3597	200,000 double rubs*	500,000 double rubs*	500,000 double rubs*
Colorfastness	AATCC 16 A	CLASS 5 (200 hours)	CLASS 5 (200 hours)	CLASS 5 (200 hours)
Hydrolytic stability	ISO 1419 C	15 WEEKS	15 WEEKS	15 WEEKS
Flammability	NFPA 260-A	CLASS 1	CLASS 1	CLASS 1
	CA TB117-2013 Section 1	PASS	PASS	PASS
	UFAC	CLASS 1	CLASS 1	CLASS 1

Greenscreen Status			Coming soon
--------------------	---	--	-------------

* Abrasion test results exceeding ACT Performance Guidelines are not an indicator of product lifespan.

ACT Registered Certification Marks



Sustainable features:

- PVC - free
- No added PFAS chemicals
- No added flame retardants
- No added antimicrobial biocides
- Prop 65 compliant
- REACH compliant
- Low VOC emissions - Passes Cal 01350

Material Disclosure Forms:

- HPD's available
- Listed in Mindful Materials Database

Performance:

- Stain resistant
- Liquid barrier
- Resists puddling
- Withstands repeated cleaning

Care & Maintenance:

Visit www.lidiinteriors.com for a list of approved cleaners and disinfectants and guidance on proper care and maintenance.

Stance
HEALTHCARE

Head Office
45 Goodrich Drive
Kitchener, ON N2C0B8
Tel: 877-395-2623
www.stancehealthcare.com

LDIinteriors™

145 Airport Drive
Rochester, NH 03867
Tel: 866-332-0700
Fax: 603-436-1777
www.lidiinteriors.com